

Hand Application Tips For Do-It Hang Tabs

1. Apply To Clean Surface. Hang Tabs should be applied to a clean, dry, contaminant-free package surface.

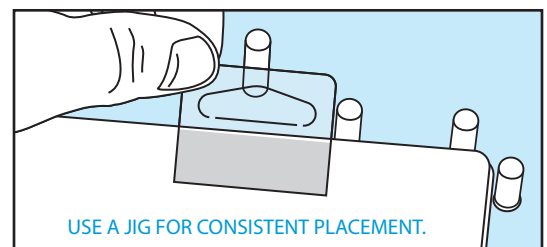
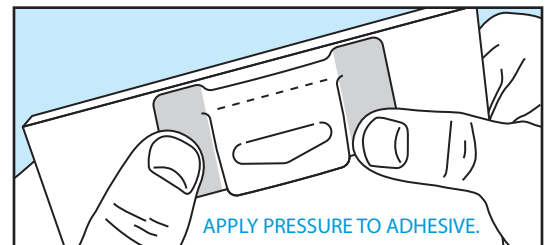
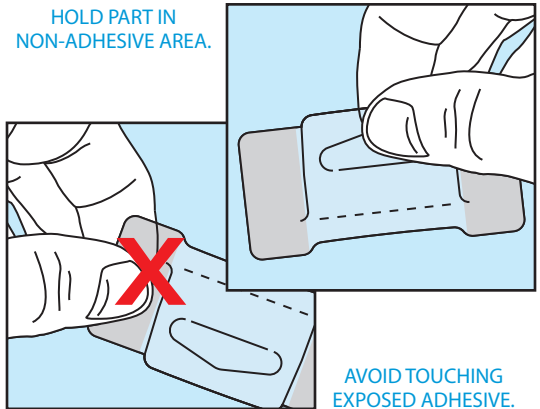
2. Apply In Optimum Conditions. Hang Tabs should be applied in a clean, dry, dust-free environment, ideally, with low humidity. The optimal temperature performance range for application and display is between 60°-90° F (15°-32° C).

3. Do Not Touch Exposed Adhesive. When applying by hand, it is important not to touch the exposed adhesive area of the hang tab. Body oils and other contaminants can cause the adhesive to lose bonding strength.

4. Must Apply Pressure. Once placed on the package, pressure needs to be applied to the non-adhesive side of the hang tab (the backside of the adhesive area) to activate the initial tack bonding.

5. Allow Time For Adhesive Bond. The adhesive becomes stronger as time passes. After 24-48 hours, the bonding strength of the adhesive to the package surface will be 2-3 times greater than the initial bond. If possible, and for the best hang tab performance, allow the hang tab to “wet out” for 24 hours or more before hanging your product.

6. Consistent Hang Tab Placement. Use an alignment fixture to consistently place the hang tab in the same location on the product.



These are six basic tips you need for successful hand application of Do-It Hang Tabs. For more detailed application information, please contact Do-It Corporation at 1-800-426-4822 or 269-637-1121.

Two additional documents that can be helpful are:

Keys to Successful Hang Tab Performance and ***Do-It Hang Tab Performance Troubleshooting Guide***

Both documents provide detailed information about hang tab application and performance. These documents and a number of helpful videos are available by request or at our website: www.do-it.com.



Do-It Corporation

(800) 426-4822 • (269) 637-1121

www.hangtab.com • email: sales@do-it.com • PO Box 592, South Haven, Michigan 49090-0592