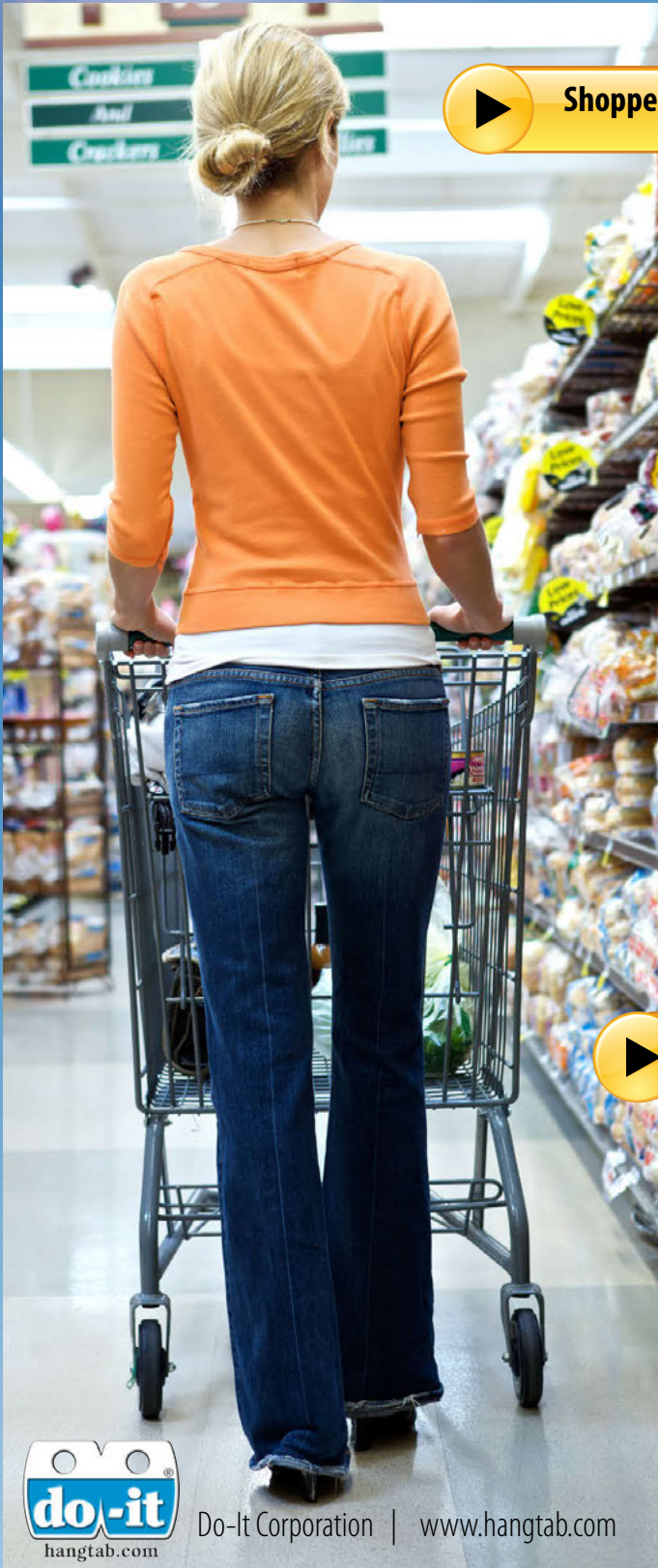
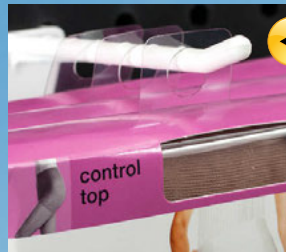


PACKAGING and MERCHANDISING COMPONENTS that Hang, Promote, and Sell



▶ Shoppers today spend **55%** less time shopping than 30 years ago. 



◀ Does your product packaging allow for different merchandising options?

▶ Is your product getting noticed in the busy retail environment?



▶ Is your product packaging attracting attention and closing the sale within a few seconds?

▶ **70%** of Retail Sales are Impulse Purchases



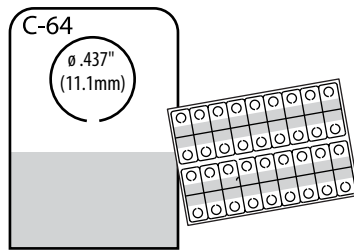
 Being **Unseen** = Being **Unsold!**



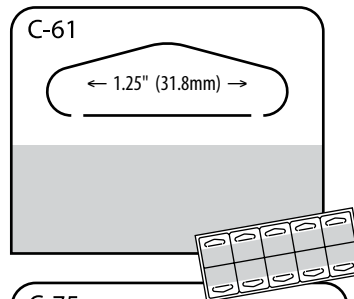
Do-It Corporation | www.hangtab.com

HANG TABS

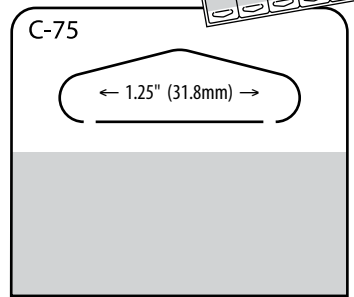
C-64	Imperial	Metric
Gauge:	10 mil	254 μ
Dimensions (W x H):	1.25 x .875in	31.8 x 22.2mm
Format:	36 / sheet	
Package:	5M/box	
Master Carton Quantity:	40M (8 boxes)	
Master Carton Weight:	32lb	15kg
Recommended Product Display Weight:	11oz	311g



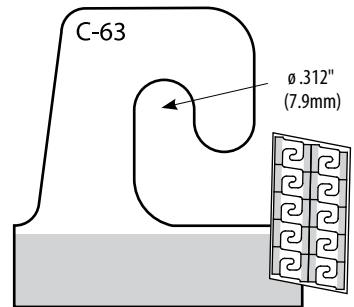
C-61	Imperial	Metric
Gauge:	15 mil	381 μ
Dimensions (W x H):	1.625 x 1.25in	41.3 x 31.8mm
Format:	20 / sheet	
Package:	5M box	
Master Carton Quantity:	20M (4 boxes)	
Master Carton Weight:	42lb	19.1kg
Recommended Product Display Weight:	14oz	397g



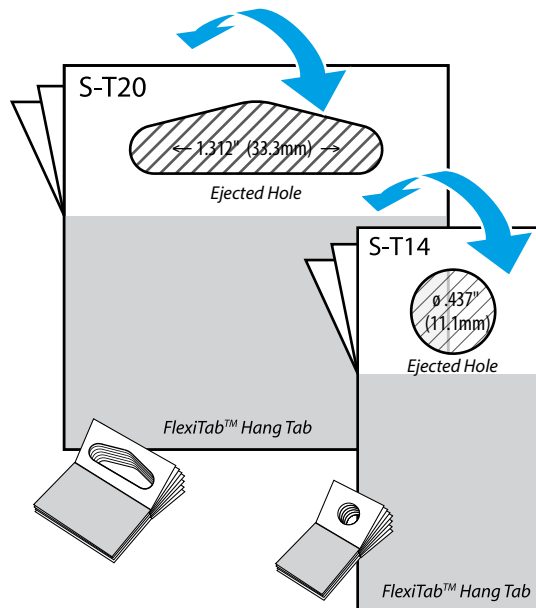
C-75	Imperial	Metric
Gauge:	15 mil	381 μ
Dimensions (W x H):	1.75 x 1.5in	44.5 x 38.1mm
Format:	24 / sheet	
Package:	5M box	
Master Carton Quantity:	20M (4 boxes)	
Master Carton Weight:	50lb	22.7kg
Recommended Product Display Weight:	18oz	510g



C-63	Imperial	Metric
Gauge:	20 mil	508 μ
Dimensions (W x H):	1.5 x 1.562in	38.1 x 39.7mm
Format:	20 / sheet	
Package:	5M box	
Master Carton Quantity:	25M (5 boxes)	
Master Carton Weight:	44lb	20kg
Recommended Product Display Weight:	12oz	340g



S-T20	Imperial	Metric
Gauge:	15 mil	381 μ
Dimensions (W x H):	2 x 2in	50.8 x 50.8mm
Format:	10 / pad	
Package:	50 pads/box	
Master Carton Quantity:	5M (10 boxes)	
Master Carton Weight:	9lb	4.1kg
Recommended Product Display Weight:	10oz	283g



S-T14	Imperial	Metric
Gauge:	15 mil	381 μ
Dimensions (W x H):	1 x 2in	25.4 x 50.8mm
Format:	10 / pad	
Package:	100 pads/box	
Master Carton Quantity:	10M (10 boxes)	
Master Carton Weight:	9lb	4.1kg
Recommended Product Display Weight:	9oz	255g

Four Reasons Retailers Love Peggable Products



- Peggable products give retailers options to display products where they will sell best.
- Peggable products present the entire product face to the consumer.
- Peggable products promote self-service.
- Peggable products are fast and easy to stock.



Repair damaged packaging and get your product back on display!



DISPLAY STRIPS & CARRY HANDLES

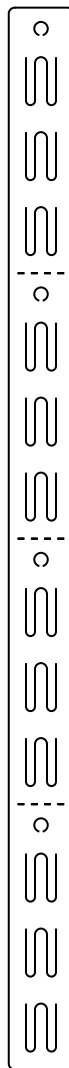
2-80	Imperial	Metric
Gauge:	25 mil	635 μ
Width:	1.375in	34.9mm
12-Position Length:	22.125in	562mm
Hang Position Spacing:	1.5625in	39.7mm
Hang Positions Per Unit:	12 / strip	
Master Carton Quantity:	1M strips / box	
Master Carton Weight:	28lb	12.7kg
Recommended Weight Per Hang Position:	3oz	85g

2-83	Imperial	Metric
Gauge:	25 mil	635 μ
Width:	1.375in	34.9mm
12-Position Length:	21.1875in	538.2mm
Hang Position Spacing:	1.5625in	39.7mm
Hang Positions Per Unit:	12 / strip	
Master Carton Quantity:	1M strips / box	
Master Carton Weight:	28lb	12.7kg
Recommended Weight Per Hang Position:	3oz	85g

R-SHT	Imperial	Metric
Gauge:	4 mil	102 μ
Dimensions (L x W):	9.5 x 1in	241.3 x 25.4mm
Format:	10M / roll	
Package:	6 x 15.5in roll	15.2 x 39.4cm
Master Carton Quantity:	10M (1 roll)	
Master Carton Weight:	34lb	15.5kg
Recommended Product Carry Weight:	15lb	6.8kg

R-SHU	Imperial	Metric
Gauge:	4 mil	102 μ
Dimensions (L x W):	17 x 1.125in	431.8 x 28.6mm
Format:	5M / roll	
Package:	6 x 12in roll	15.2 x 30.48cm
Master Carton Quantity:	5M (1 roll)	
Master Carton Weight:	39lb	17.7kg
Recommended Product Carry Weight:	25lb	11.3kg

2-80



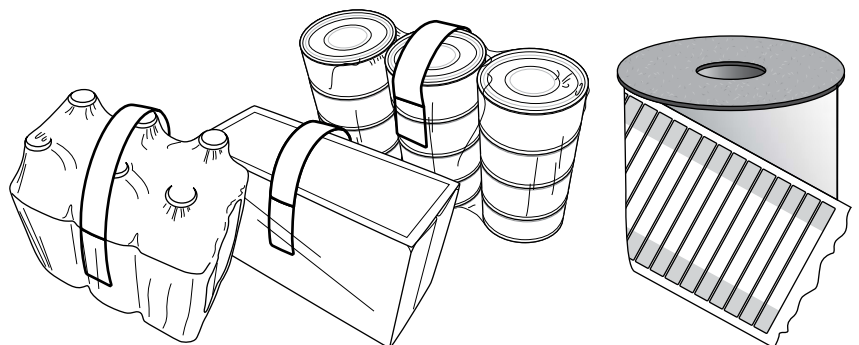
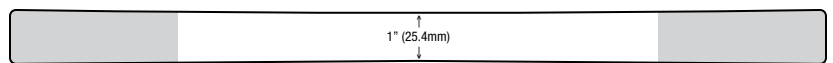
2-83



R-SHT



R-SHU



UNIQUE COMPONENTS

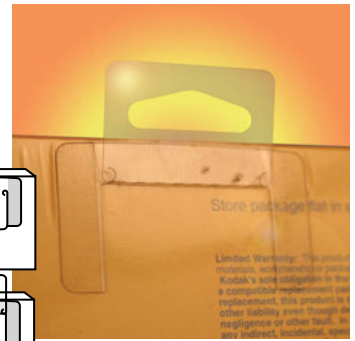
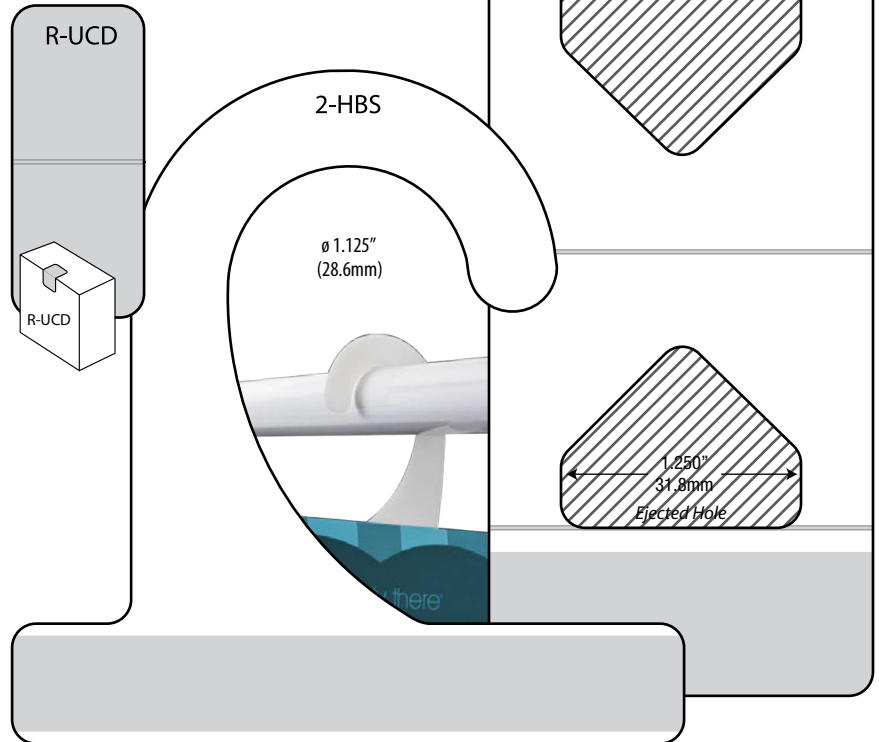
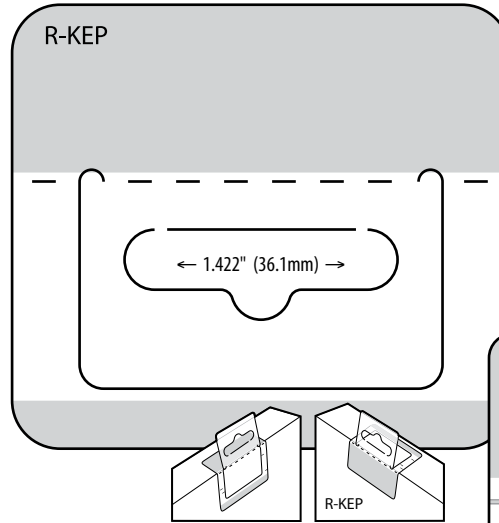
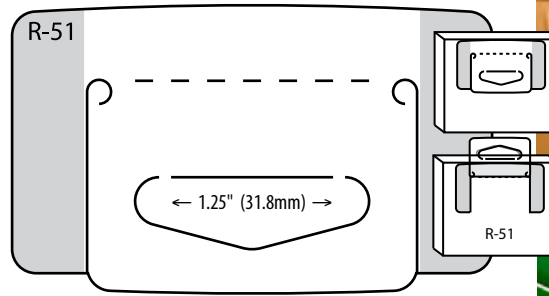
R-51	Imperial	Metric
Gauge:	10 mil	254 μ
Dimensions (W x H):	2.5 x 1.5in	64.3 x 38.1mm
Format:	4.5M / roll	
Package:	6 x 15.5in roll	15.2 x 39.4cm
Master Carton Quantity:	13.5M (3 rolls)	
Master Carton Weight:	36lb	16.4kg
Recommended Product Display Weight:	10oz	283g

R-KEP	Imperial	Metric
Gauge:	20 mil	508 μ
Dimensions (W x H):	2.594 x 2.313in	65.9 x 58.7mm
Format:	1.5M / roll	
Package:	6 x 15.5in roll	15.2 x 39.4cm
Master Carton Quantity:	3M (2 rolls)	
Master Carton Weight:	23lb	10.4kg
Recommended Product Display Weight:	20oz	567g

R-UCD	Imperial	Metric
Gauge:	10 mil	254 μ
Dimensions (W x H):	.6875 x 1.625in	17.5 x 41.3mm
Format:	9.5M / roll	
Package:	6 x 15.5in roll	15.2 x 39.4cm
Master Carton Quantity:	38M (4 rolls)	
Master Carton Weight:	43lb	19.5kg

R-J79	Imperial	Metric
Gauge:	15 mil	381 μ
Dimensions (W x H):	2 x 4.625in	50.8 x 117.5mm
Format:	2.5M / roll	
Package:	6 x 15.5in roll	15.2 x 39.4cm
Master Carton Quantity:	5M (2 rolls)	
Master Carton Weight:	40lb	18.2kg
Recommended Product Display Weight:	32oz	907g

2-HBS	Imperial	Metric
Gauge:	50 mil	1270 μ
Dimensions (W x H):	3.5 x 3.5in	88.9 x 88.9mm
Format:	loose piece	
Package:	2.5M box	
Master Carton Quantity:	2.5M (1 carton)	
Master Carton Weight:	34lb	15.5kg
Recommended Product Display Weight:	10oz	283g



Do-it Corporation

PO Box 592 | 1201 Blue Star Memorial Highway | South Haven, MI 49090-0592 | USA
(800) 426-4822 | (269) 637-1121 | www.hangtab.com